

INSTRUCTION

ALTO GARDEN HX HYDROPONIC TOWER

OWNER' S MANUAL

16

CONTACT US

If you have any other questions, please reach out to us!
We can't wait to help you grow!



📍 Address:

3043 Foothill Blvd, Ste. 12
La Crescenta, California 91214
United States

Email: contact@altogarden.com

📞 Phone: +1 818-940-1140

🌐 Website: www.altogarden.com

📌 For support or inquiries, please visit our website or contact us directly.
Thank you for choosing ALTO Garden!

CONTENTS

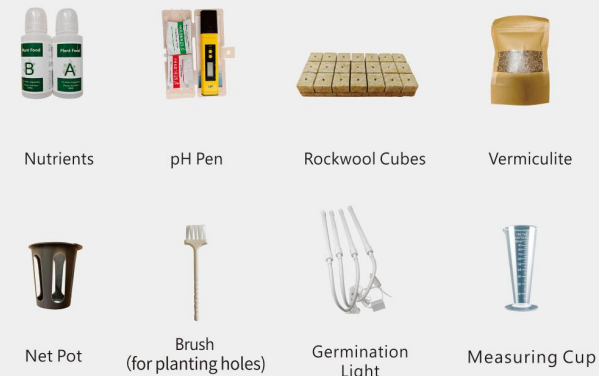
What's in the Box	03
Tower Assembly	04
LED Light Kit Assembly	08
Set Up the LED Light Timer	09
Start Your Seeds	10
Adding Water & Nutrients	11
Emptying Your Tower & Cleanup and Storage	12
Maintaining Your Tower	13
Troubleshooting	14

WHAT'S IN THE BOX?

TOWER COMPONENTS



GROWING&MAINTENANCE



LED GROWING LIGHT KIT (optional)



LED Light Base



LED Light Lamp (X8)

TOWER ASSEMBLY

- 1 Install four wheels onto the bottom of the water tank. Ensure water tank is level.

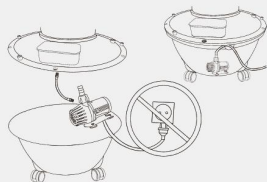


ALTO Garden
YouTube Channel



Search Channel for
HX Assembly Video

- 2 Place water pump in the water tank. Place power cord in the notch, found on the lip of the tank.



DO NOT run pump
without water

✓ **Use GFCI** outlet
when plugging in.

- 3 Place water tank lid on the water tank. Place 1st tower section on top of the water tank lid.

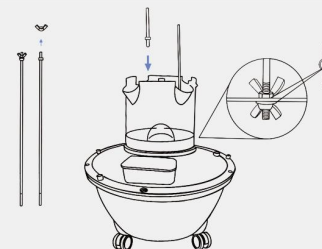


TOWER ASSEMBLY

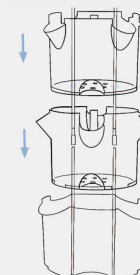
- 4 Place **gasket** inside the 1st tower section, over the central hole. Insert 1st pair of support rods through the sides of the gasket, until ~3/4 inch of support rod extends underneath the water tank lid.

Place **another gasket** on the underside of the water tank lid, to support the rods from underneath.

Tighten wingnuts on the support rods above the 1st tower section, and tighten wingnuts beneath the water tank lid, to secure the support rods in place. After wingnuts are tightened - the 1st tower section is affixed to the water tank lid.



- 5 Stack 2nd and 3rd tower sections on top, while guiding the support rods through the guide holes in the tower sections.



TOWER ASSEMBLY

- 6 Use the connecting nuts, to extend the length of the support rods. Install connecting nuts and attach 2nd pair of support rods.



- 7 Continue stacking 4th, 5th and 6th tower sections. Extend support rods once again, with connecting nuts. Complete stacking 7th and 8th tower sections, then the tower cap on top.



- 8 Place third and final gasket inside the tower cap over the central hole, with the support rods extending through the sides of the gasket. Attach wingnuts to support rods to secure the gasket in place.

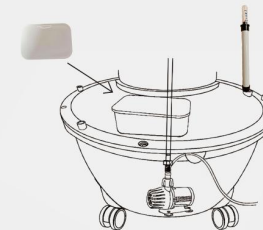


TOWER ASSEMBLY

- 9 Attach swivel connector to the hose. Attach swivel to the swivel connector, which is attached to the hose. Feed hose down the central holes, all the way down to the water tank, until swivel rests in place.



- 10 Attach hose connector to the water pump. Attach hose to the hose connector, which is attached to the water pump. Install tank cap. Insert water monitor through the vacant hole on the tank lid.



- 11 Install 6 tank screws around the tank lid.

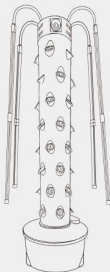


LED LIGHT KIT ASSEMBLY (OPTIONAL)

- 12 Place lamp base on the top of the tower.



- 13 Connect LED lamps to the lamp base.



- 14 Remove protective film from each of the LED lamps.

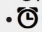
NOTE: plants will receive fuller / richer light, with protective film removed.

- 15 Inset net pots into the tower.

SET UP THE LED LIGHT TIMER

TIMER COMPONENTS OVERVIEW

1. Slide Switch:

- ON → Always On
-  → Automatic (Timer Mode)
- O → Always Off

2. Arrow → Indicates the current time of day.

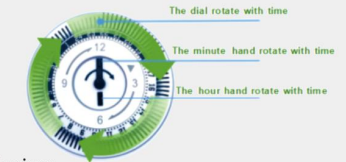
3. Setting Pins:

- Each pin represents 15 minutes.
- Push OUT → ON
- Push IN → OFF


4. Dial (1–24 hours):

- The dial and pins rotate automatically during operation.

5. Power Indicator → Lights up when the timer is active.



How to Set the Timer:

1. Push ALL setting pins to the INSIDE (default OFF position).
2. Within your desired ON time period, push pins OUTSIDE.
 - Example : To set ON from 7:00 to 21:00, push pins outward between those times.
3. Rotate the dial **clockwise** until the arrow points to the current time.
4. Slide the switch to the  (Automatic) position.



Note: We recommend lighting for 12 to 14 hours a day (adjust as needed)

START YOUR SEEDS



Pour water and soak for 5 to 10 minutes. Then, place rockwool in bottom of kitchen sink. Let it sit, and drain for 10 minutes.

Plant seeds of your choice into the planting holes of the rockwool cubes.

Sprinkle vermiculite on top of the seeds and the cubes. Vermiculite has excellent water retention, and helps your seeds stay moist.



Provide a daily misting and maintain 1/4" water in the tray. Seeds germinate best at 65 to 80 degrees Fahrenheit.

As soon as seeds begin to sprout, place them under a grow light.

About 2 weeks after sprouting, your seedlings will be ready to be transferred into your hydroponic tower.

PLANTING GREENS

TRANSPLANT seedling to hydroponic tower by placing one cube inside each net pot, gently pressing until cube touches the pot base.

Important: Cube must be touching bottom of the net pot to receive proper water and nutrients.

ALTO Garden
YouTube Channel



Search Channel for
Starting Seeds Video

ADDING WATER & NUTRIENTS

FILL WATER TANK WITH WATER

- Fill the reservoir with room temperature water (approx 12 gallon total capacity).
- Do not overfill.
- Avoid softened, heavily chlorinated, or very hard water – these may harm plants.
- Tip: Place a protective mat under the reservoir if used on hardwood floors or carpet.

ADD NUTRIENTS

- Add 15 ml each of Mineral Blend A & B per gallon of water, following label instructions.

MIX THOROUGHLY

- Stir the solution with a spoon or utensil (not hands).
- The mixture may be acidic/alkaline and can irritate skin.

TEST & ADJUST pH

- Use the pH tester to check the solution.
- Optimal pH: 5.5–6.5. Adjust if needed.

START THE PUMP

- Plug in the pump and confirm water is flowing from the top of the tower before sealing the lid.

SET WATERING TIMER

- Use the included timer for cycled watering (not continuous flow).
- Indoor recommendation:
 - 15 minutes ON / 45 minutes OFF for 14–15 hours a day (adjust as needed).

SEAL THE TANK

- Place the tank cap securely on the lid.

MAINTENANCE TIP

- Add nutrients to fresh water every time you refill the water tank.
- Pre-mix water and nutrients in a separate bucket (15 ml each of A & B per gallon water). Adjust pH after refilling.

EMPTYING YOUR TOWER & CLEANUP AND STORAGE

EMPTY YOUR TOWER

- Unplug the pump and LED lighting kit.
- Remove the screws securing the water tank.
- Gently move the tower aside to access the water tank.
- Remove the water from the tank.
- The drained nutrient solution can be used to water outdoor landscape plants.
- Refill with fresh water and nutrients (follow nutrient mixing guidelines).

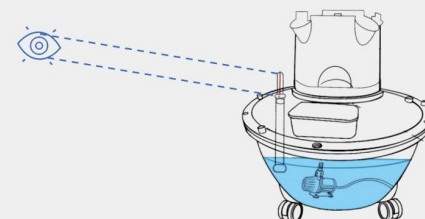
CLEANUP AND STORAGE

- Pull the net pots with plants from the planting holes.
- Start from the top and disassemble tower sections.
- Do not remove the bottom section from the water tank lid.
- Rinse the pump with clean water before storage.
- After cleaning, store all parts inside the water tank for future use.
- Place a waterproof mat under the water tank during harvesting or maintenance to protect floors.

MAINTAINING YOUR TOWER

DAILY

- Check water level (refer to “ADDING WATER & NUTRIENTS” section).
- Ensure the water tank is filled to the recommended level.



WEEKLY

- Test pH after refilling the water tank and adjust if needed (optimal range: 5.5–6.5).
Tip: Yellowing leaves may indicate pH imbalance.
- Trim roots dangling into the water tank to prevent pump clogging



MONTHLY

- Clean tower cap holes with a toothpick to remove debris.
- Clean the pump:
 1. Unplug the pump.
 2. Remove the pump.
 3. Remove the pump cover and rinse with water to clear debris.



SEMIANNUALLY

Deep clean all components:

- Disassemble the tower.
- Clean tower sections, cap, lid, and pump with warm soapy water and a sponge.

TROUBLESHOOTING

Water Pump Issues – No or Low Water Flow

- Ensure there is sufficient water in the water tank. As guidance – always keep your water tank at least 1/3 full.
- Ensure the pump is plugged in.
- If using a timer with your water pump, try the pump without the timer.
- Check if the outlet's GFI or breaker has tripped.
- Rinse the water pump under running water; clean the filter in the water pump.
- Ensure the hose is firmly connected to both the water pump and swivel.
- Check for kinks or blockages in the hose.
- Unplug the water pump. Replug the pump after 5 minutes.

Tower Cap Overflowing

- Use a toothpick or small tool to clear any clogged holes in the tower cap.

Water Leaks from Around the Net Pots

- Verify that the tower is level.
- Rotate or gently shake the net pot, to dislodge any debris that may be disturbing the intended water flow of the system.

Algae Buildup

- Ensure the areas between all sections are secure and tight – water tank-to-water tank lid, between the tower sections, to the tower cap, and the tower lid. Light exposure promotes algae growth.

TROUBLESHOOTING

Yellow or Discolored Leaves

- Check and adjust pH to stay within 5.5 – 6.5 (high pH can cause yellowing).
- The mineral blend A & B may be out of balance. Check the proper dilution ratio was used, as directed on the nutrient labels.
- During periods of hot weather – plants can absorb a lot of water leaving the water tank with a high concentration of nutrients. Dilute the water tank by adding more water, or empty and re-start with the proper nutrient levels.
- If using LED lamps – ensure the protective film cover has been removed.

LED Light Troubleshooting

- Ensure the light base toggle switch is turned to ON.
- Ensure the LED lamp is fully inserted, with the side-clips in the seated position.
- If LED lamp doesn't turn on, uninstall light and turn it around, reversing the connections. Re-install.
- Remove the LED lamp and try it on another fixture. If it works, the issue may be with the fixture connections.
- Contact our Customer Support team for further assistance.



ALTO Garden - YouTube

www.youtube.com